

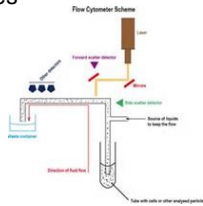
FLOW CYTOMETRY, CHROMOSOMAL ANALYSIS, MOLECULAR ANALYSIS



FLOW CYTOMETRY



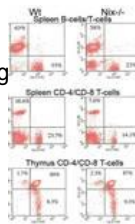
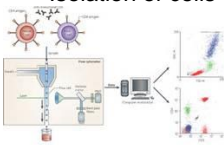
- Isolation of Particles
- Light Scattering
- Detection of Fluorochromes



IMMUNOPHENOTYPING



- Identification of antigens using detection antibodies
- CD designation
- Specimen Requirements
- Isolation of cells of interest by Gating



DIAGNOSIS AND CLASSIFICATION

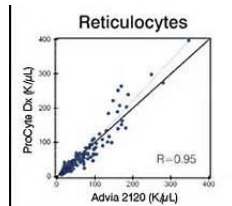


- Mature Lymphoid Malignancies
- Acute Leukemia
- Immunodeficiency Disorders
- CD 34 Enumeration
- Paroxysmal Nocturnal Hemoglobinuria

RETICULOCYTE COUNTING



- Fluorescent Dye binds RNA
- Immature Reticulocyte Fraction



DNA ANALYSIS



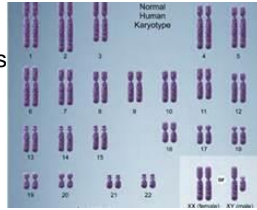
- Proliferation
- Ploidy
- Clinical Applications



CHROMOSOME ANALYSIS



- Structure and Morphology
- Specimen Preparation
- Harvest and Banding
- Chromosomal Analysis
 - Numerical Aberrations
 - Structural Aberrations
 - Polymorphic Variation
- Nomenclature



MOLECULAR ANALYSIS



- Laboratory Methods
 - Southern Blot
 - PCR
 - In situ hybridization
 - Fluorescence in situ hybridization
 - DNA sequencing

